

## “Mobile Mapper CX for GIS Mapping”

The Mobile Mapper CX is a rugged GPS unit suitable for GIS use. It provides real time sub-meter accuracy and Sub-foot accuracy with post processing. The battery gives a full day of use and is field replaceable. The Mobile Mapper CX works well with the MobileMapping software for traversing, road inventory, utility data recording, or any other type of GIS data collection.

Multiple DGPS modes are supported including WAAS, Beacon, NTRIP, Direct IP, and RTCM. These DGPS modes give the user sub-meter accuracy. In the United States, WAAS is probably the easiest and most convenient method to receive a DGPS signal. Bluetooth and Wireless LAN are also supported.

The Mobile Mapper CX can store GPS data for a post processing solution with the optional post processing activation. The post processing is accomplished in the MobileMapper Office software. This process allows users to achieve sub-foot accuracy.

The Mobile Mapper CX is built for rugged Northwest conditions. It weighs barely over one pound and it meets the IP54 standard for water intrusion. It can also withstand a 4.9 foot drop to concrete or other hard surfaces.

One testimonial to the Mobile Mapper CX’s ruggedness and ease of use is the fact that it is used as the field terminal with the ProMark 500, Magellan’s flagship survey grade GPS system. It’s RS232 port, USB port, and Bluetooth capability allow it to work with a variety of equipment.

**NOTE:** The MobileMapper CX does not work with the new ArcPad 8.0. It is fine with ArcPad 7.1.

**#MMCX without software Price: \$2,495.00**

**#MMCX w MobileMapping Price: \$2,795.00**

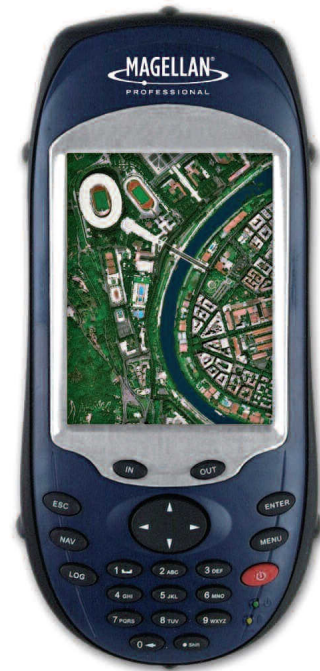
**#MMCX w MobileMapping/PP Price: \$3,290.00**  
**(Includes Post Processing activation)**

Contact Jon Aschenbach at 503-707-6236 for additional information.

To order:

**Resource Supply, LLC**  
**11607 SW Winter Lake Dr.**  
**Tigard, OR 97223**  
**Phone: 503-707-6236**  
**Fax: 503-536-6869**  
**Web: [www.resourcesupplyllc.com](http://www.resourcesupplyllc.com)**  
**Email: [jon@resourcesupplyllc.com](mailto:jon@resourcesupplyllc.com)**

(Copyright 2099 by Resource Supply, LLC)



**Resource**

*“Expert Knowledge”*

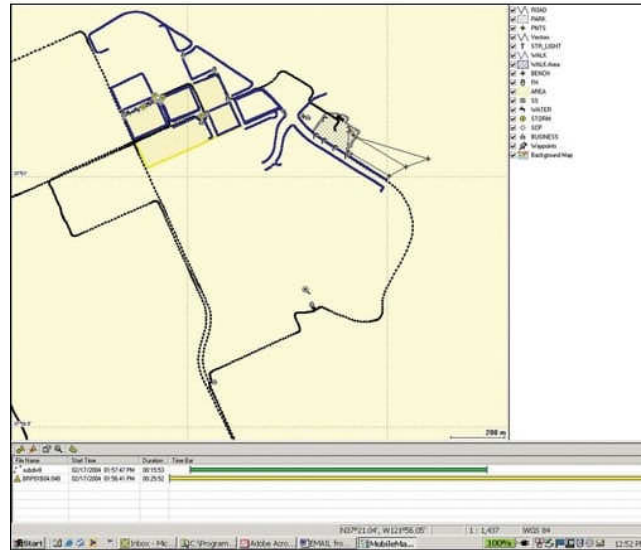
*“Superb Support”*

**Supply**

LLC

## Specifications for the Mobile Mapper CX:

Update Rate (Hz)	1 Hz
Real-time Accuracy	< 1 m
Post-Processed Accuracy	< 30 cm
Channels	14
Channels: L1 code and carrier	12
Channels: SBAS (WAAS/EGNOS/MSAS)	2
User Selectable standard datums	Yes
User-definable datums	Yes
RTCM Message Types	DGPS
Antenna Type	Internal & External
Connectivity	NTRIP & Direct IP
Operating Temp Min (°C)	-10
Operating Temp Max (°C)	60
Storage Temp Min (°C)	-20
Storage Temp Max (°C)	70
Data Storage	128 MB SDRAM, 128 NAND Flash memory, SD Card up to 4 GB
Unit Height (inches)	7.7
Unit Width (inches)	4.6
Unit Depth (inches)	1.8
Weight (g)	480 g
Operating System	Windows CE.NET 5.0
Shock	1.5 meter drop to concrete
Bluetooth	Yes
Waterproof	IP54
RTCM Version Supported	RTCM 2.3



**MobileMapper Office Software  
(Included with MobileMapper CX)**

### Included with the MobileMapper CX unit:

- MobileMapper CX
- Clip-on I/O module with external power
- Universal AC adaptor
- USB data cable
- Carrying Case
- Hand strap
- (2) stylus pens
- MobileMapper CX Companion CD
- (optional) Post Processing Activation

To order:

**Resource Supply, LLC**  
**11607 SW Winter Lake Dr.**  
**Tigard, OR 97223**  
**Phone: 503-707-6236**  
**Fax: 503-536-6869**  
**Email: [jon@resourcesupplyllc.com](mailto:jon@resourcesupplyllc.com)**

(Copyright 2009 by Resource Supply, LLC)

**Resource**

*"Expert Knowledge"*

*"Superb Support"*

**Supply**

LLC