

## ProMark 3 Complete Survey Set

This configuration is for those who are just starting out with ProMark 3 units. It will give survey grade results for an outstanding price. The set includes two receivers and the GNSS Solutions post-processing (L1) software.

### Features:

- Obtain centimeter level accuracy performing static, stop & go and kinematic surveys.
- Up to 72 hours of continuous data collection.
- Includes GNSS Solutions post-processing software with least squares adjustment.
- Each receiver weighs only 1 lb.
- 8 hrs. of operation on a charge. External power kit available.
- Advanced GIS data collection.
- Point/line/area mapping.
- Real-time area calculation.
- Offsets for all feature types.
- North American base map.

The ProMark 3 is the workhorse of the GPS survey industry. The reasons are simple. It is easy to use, inexpensive and produces consistent results. At \$6,795 for a two receiver set including software, it's the best bang-for-your-buck today to get consistent centimeter-level accuracy in horizontal and vertical."

This ProMark 3 Complete Survey Set is the most widely sold survey grade solution that Magellan Professional sells. It's ideal for setting survey control for construction sites and topo surveys. A baseline of several miles can be occupied and processed in less than a 1/2 day.

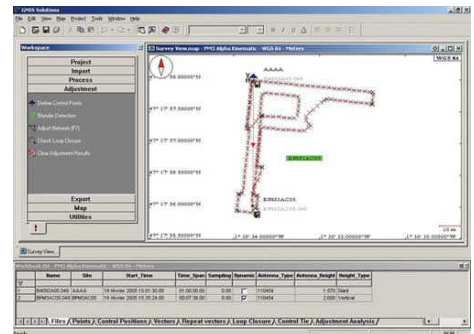
The ProMark 3 Complete Survey Set easily beats all the limits associated with optical instruments in terms of portability and range. Its ease of use and cost effectiveness make it the must-have GNSS system for post processed survey.

**#PM3CompleteSurveySet**

**Price: \$6,795.00**

All ProMark 3 systems sold by Resource Supply, LLC include up to 4 hours of free training at the Tigard office. For more information please call Jon Aschenbach at 503-707-6236 or email: [jon@resourcesupplyllc.com](mailto:jon@resourcesupplyllc.com).

**Resource Supply, LLC**  
11607 SW Winter Lake Dr.  
Tigard, OR 97223  
Phone: 503-707-6236  
Fax: 503-536-6869  
Email: [jon@resourcesupplyllc.com](mailto:jon@resourcesupplyllc.com)  
(Copyright 2008 by Resource Supply, LLC)



**GNSS Solutions Software**

**Resource**

*"Expert Knowledge"*

*"Superb Support"*

**Supply**  
LLC

## ProMark 3 Complete Survey Set Specifications:

### GNSS Characteristics:

14 parallel channels  
Integrated real-time (WAAS, EGNOS)  
Protocol: NMEA0183  
Update rate: 1 Hz

### Accuracy Specifications

Static Survey Performance:  
Horizontal: 0.005 m + 1 ppm  
Vertical: 0.01 m + 2 ppm  
Azimuth: < 1 arc second  
Kinematic Survey Performance  
Horizontal: 0.012 m + 2.50 ppm  
Vertical: 0.015 m + 2.50 ppm  
Recommended Initializer Bar Occupation: 5 minutes

### Real Time Performance

SBAS (WAAS, EGNOS) (rms)  
Accuracy: Horizontal: < 1 m

### Internal Memory Capacity

Up to 72 hours of 10 satellites @ 1 second interval

### Size and Weight:

Receiver Dimensions: 7.7" x 4.6" x 1.8"  
Unit: 1.05 pounds  
Antenna: 1.00 pounds

### Receiver

Operating Temperature  
14 to 140 degrees F.  
Water Resistant  
Shock: 4.9 feet drop onto concrete

### Battery Life: 8 hours typical

External power available for extended operation

To Purchase, contact:

### Resource Supply, LLC

11607 SW Winter Lake Dr.

Tigard, OR 97223

Phone: 503-707-6236

Fax: 503-536-6869

Email: [jon@resourcesupplyllc.com](mailto:jon@resourcesupplyllc.com)

[www.resourcesupplyllc.com](http://www.resourcesupplyllc.com)

(Copyright 2008 by Resource Supply, LLC)



ProMark 3 Receiver

### ProMark 3 Complete Survey Set Package Contents:

- (2) ProMark 3 receivers w/aces.
- (2) External Antennas with cables
- (2) Vertical Antenna extensions
- (2) Carry Cases
- (2) Lithium Battery Packs
- (1) User documentation on CD
- (1) GNSS Solutions Software (L1)

Also included when purchased from Resource Supply, LLC:

- (2) 1 gigabyte SD cards
- (4) Hours of free training at the Tigard office

Telephone and email support  
(Note: Support does not include training over the phone)

**Resource**

*"Expert Knowledge"*

*"Superb Support"*

**Supply**

LLC