

## ProMark 3-RTK Single unit Network RTK configuration: The Network L1 RTK Rover

The Network RTK PM3 configuration is the most affordable RTK solution on the market today. The PM3-RTK delivers 1cm accuracy in real-time which makes it ideal for construction staking, topo surveys and high precision GIS work. No messy base station to setup, just connect your PM3-RTK to the local RTK Network via mobile phone (not included) and you're ready to go.

Using the Carlson-Magellan developed Fast Survey data collection software, you can calibrate the PM3 to your local coordinates or you can work in common coordinate systems such as State Plane or UTM.

Add the total station option and you have maximum data collection flexibility in the field. Simply perform your GPS work, then connect your PM3 hand-held to your total station and continue collecting data with your total station where GPS can't.



**#PM3RTKSingleNetwork**

**Price: \$6,145.00**

Add Total Station interface: \$400

**#PM3RTKSingleNetworkTotal**

**Price: \$6,545.00**

All ProMark 3 systems sold by Resource Supply, LLC include 4 hours of free training at the Tigard office. For more information please call Jon Aschenbach at 503-707-6236 or email: [jon@resourcesupplyllc.com](mailto:jon@resourcesupplyllc.com).

**Resource Supply, LLC**  
11607 SW Winter Lake Dr.  
Tigard, OR 97223  
Phone: 503-707-6236  
Fax: 503-536-6869  
Email: [jon@resourcesupplyllc.com](mailto:jon@resourcesupplyllc.com)  
[www.resourcesupplyllc.com](http://www.resourcesupplyllc.com)

(Copyright 2008 by Resource Supply, LLC)



Fast Survey on a ProMark 3 RTK

**Resource**

*"Expert Knowledge"*

*"Superb Support"*

**Supply**

LLC

## ProMark 3-RTK Single unit Network RTK Specifications:

### GNSS Characteristics:

14 parallel channels  
L1 C/A code and carrier  
SBAS tracking and use in RTK process  
RTCM 2.3 (rover mode)  
Connectivity: NTRIP & Direct IP  
Update rate: 1 Hz

### Real Time Accuracy (baselines less than 10km)

RTK Horizontal—Fixed 1cm + 1ppm  
RTK Horizontal—Float 20cm + 1ppm  
(WAAS,EGNOS) Horizontal: < 1m

### Post-Processed Accuracy

#### Static:

Horizontal: 0.005 m + 1 ppm  
Vertical: 0.01 m + 2 ppm  
Observation time: 4 to 40 minutes

#### Kinematic Survey

Horizontal: 0.012 m + 2.5 ppm  
Vertical: 0.015 m + 2.5 ppm  
Recommended Initializer bar occupation 5 min.

### Internal Memory Capacity

Up to 72 hours of 10 satellites @ 1 second interval

### Size and Weight:

Receiver Dimensions: 7.7" x 4.6" x 1.8"  
Receiver Weight: 1.05 pounds  
Antenna: 1.00 pounds (7.5" diameter)

### Receiver

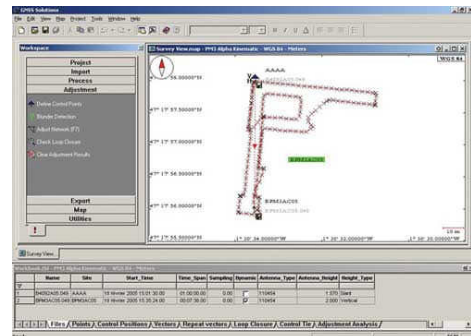
Operating Temperature: 14 to 140 degrees F.  
Water Resistant  
Shock resistant to 4.9 feet drop onto concrete

**Battery Life:** 8 hours typical (External power option available)

### Resource Supply, LLC

11607 SW Winter Lake Dr.  
Tigard, OR 97223  
Phone: 503-707-6236  
Fax: 503-536-6869  
Email: jon@resourcesupplyllc.com  
www.resourcesupplyllc.com

(Copyright 2008 by Resource Supply, LLC)



GNSS Solutions Software

### Included in the ProMark 3 Single Unit RTK Set:

ProMark 3 RTK receiver  
Antenna and vertical extension  
Fast Survey Software  
GNSS Solutions Software  
Instructions and ProMark 3 receiver accessories

Please refer to the Magellan Professional Brochure on the ProMark 3 RTK for complete specifications, performance explanations, and other details.