

ProMark 3-RTK Base/Rover and Network RTK configuration: Advanced L1 RTK flexibility configuration

The Advanced PM3-RTK configuration offers incredible productivity. Use the base/rover configuration when an RTK Network is not available. Use both as rovers when there is an RTK Network available. Or, use them as a static pair for post-processing. The ProMark line has long been the market leader for cost effective static post-processing.

In the base/rover RTK configuration, PM3-RTK uses Magellan's unique BLADE(TM) technology which takes advantage of WAAS/EGNOS/MSAS satellites and uses them like another GPS satellite. It's like having another constellation at your disposal. More satellites means more productivity for you.

Using the Carlson-Magellan developed Fast Survey data collection software, you can calibrate the PM3 to your local coordinates or you can work in common coordinate systems such as State Plane or UTM.

Add the total station option and you have maximum data collection flexibility in the field. Simply perform your GPS work, then connect your PM3 hand-held to your total station and continue collecting data with your total station where GPS can't.

Tribrach and tripod are not included.

#PM3RTKBaseRoverNetwork

Price: \$11,995.00

Add Total Station interface: \$400

#PM3RTKBaseRoverNetworkT

Price \$12,395.00



Fast Survey on ProMark 3 RTK

All ProMark 3 systems sold by Resource Supply, LLC include 4 hours of free training at the Tigard office. For more information please call Jon Aschenbach at 503-707-6236 or email: jon@resourcesupplyllc.com.

Resource Supply, LLC
11607 SW Winter Lake Dr.
Tigard, OR 97223

Phone: 503-707-6236

Fax: 503-536-6869

Email: jon@resourcesupplyllc.com

www.resourcesupplyllc.com

(Copyright 2008 by Resource Supply, LLC)

Resource

"Expert Knowledge"

"Superb Support"

Supply

LLC

ProMark 3 RTK Base/Rover & Network Specifications:

GNSS Characteristics:

14 parallel channels
L1 C/A code and carrier
SBAS tracking and use in RTK process
RTCM 2.3 (rover mode) 3.1 for Base and Rover
Connectivity: NTRIP & Direct IP
Update rate: 1 Hz

Real Time Accuracy

RTK Horizontal—Fixed 1cm + 1ppm
RTK Horizontal—Float 20cm + 1ppm
(WAAS, EGNOS) Horizontal: < 1m

Post-Processed Accuracy

Static:

Horizontal: 0.005 m + 1 ppm
Vertical: 0.01 m + 2 ppm
Observation time: 4 to 40 minutes

Kinematic Survey

Horizontal: 0.012 m + 2.5 ppm
Vertical: 0.015 m + 2.5 ppm
Recommended Initializer bar occup. 5 min.

Internal Memory Capacity

Up to 72 hours of 10 satellites @ 1 second interval

Size and Weight:

Receiver Dimensions: 7.7" x 4.6" x 1.8"
Receiver Weight: 1.05 pounds
Antenna: 1.00 pounds (7.5" diameter)
Radio: 5.7" x 3.9" x 1.6", .44 lb.

Receiver

Operating Temperature: 14 to 140 degrees F.
Water Resistant
Shock resistant to 4.9 feet drop onto concrete

Battery Life: 8 hours typical (External power option avail.)

Order from:

Resource Supply, LLC

11607 SW Winter Lake Dr.

Tigard, OR 97223

Phone: 503-707-6236

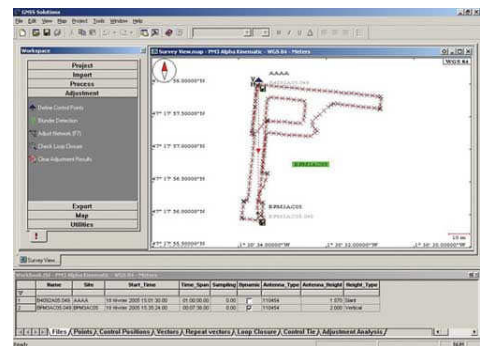
Fax: 503-536-6869

Email: jon@resourcesupplyllc.com

(Copyright 2008 by Resource Supply, LLC)



ProMark 3 RTK



GNSS Solutions Software

Included in the Base/Rover ProMark 3 RTK Set:

- (2) ProMark 3 RTK receivers
- (2) Antennas and vertical extensions
- (2) License free radios
- (1) Fast Survey Software
- (1) GNSS Solutions Software
- Instructions and ProMark 3 receiver accessories